

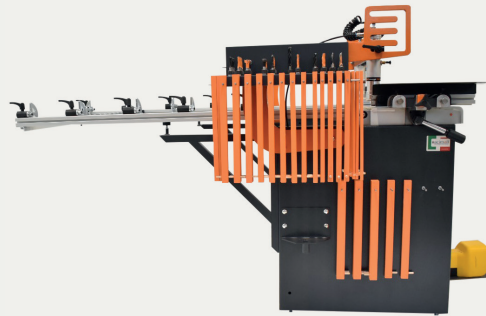
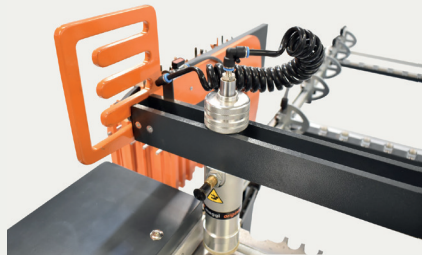


*Semiautomatic,
multispindle, single-
head boring machine*

MS LINE 704

PATENTED SYSTEM

- **A NEW METHOD OF DRILLING:
FASTER, SMARTER, EASIER**
- **SET UP IN HALF THE TIME**
- **BREAK RULES : NO MORE LIMITS
WITH THE 32 mm SYSTEM**



Watch the video on Maggi You Tube Channel
to learn how our Patent works





MS LINE 704

SERVICE

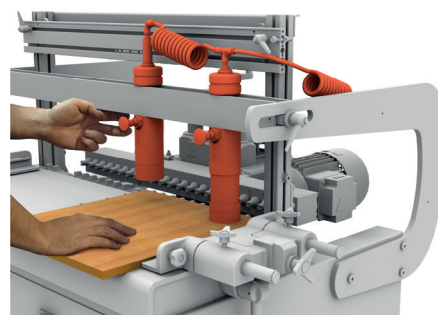
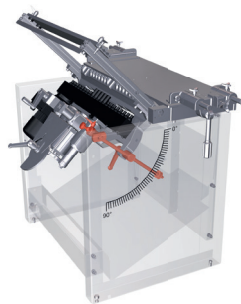
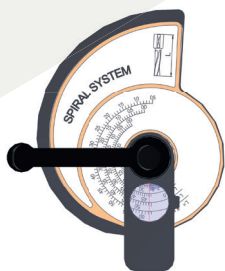
Worldwide after-sale service.

Real-time, on-line remote assistance through a dedicated augmented reality APP.

Spare-parts availability for up to 10 years, shipment within 24 hrs

DATA SHEET

Spindles	N 23
Left and right spindles	N. 11 left - N. 12 right
Spindle interaxis	32 mm
Total interaxis:	704 mm
Max. tool diameter	40 mm
Max. boring depth	65 mm
Max. boring height	55 mm
Height of the working table	860 mm
Max. panel thickness	60- 200 mm
Max. panel dimensions	960 x 3000



QUICK SET-UP

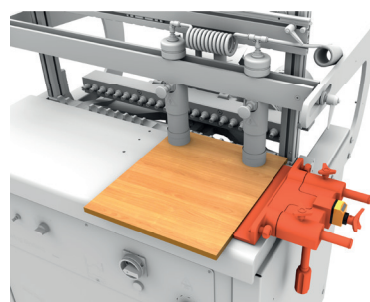
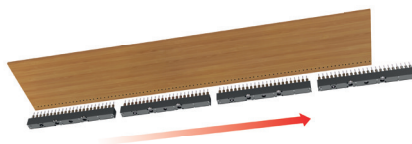
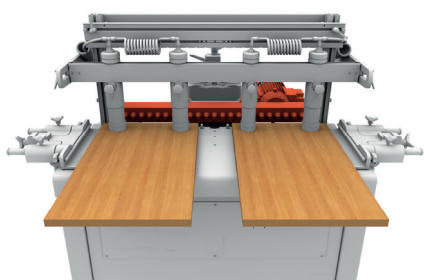
Adjusting the boring depth is extremely easy with the "Spiral System" device and the 10 mm automatic reset for vertical drilling

VERSATILITY

It drills at any angle between 0° and 90°

SAFE PANEL HOLD-DOWN

The quick-positioning, safety, hold-down clamping units ensure the greatest stability and steadiness of the working piece during the working cycle and the highest accuracy of the drilling process



FAST HORIZONTAL DRILLING

Thanks to the 704 mm interaxis and the large working table, You can process 2 panels having 348 mm width at the same time

FAST VERTICAL DRILLING

You can process 3000 mm - long sides in 4 working cycles

PERFECT PANEL JOINTS

The ref. side fences, adjustable on numeric counters, always represent a precise reference point, quick to set-up, and guarantee perfect parallelism of the drilling operations.

MAGGI TECHNOLOGY

Via delle Regioni, 299
50052 Certaldo (Firenze) Italia

SERVICE

+39 0571 635 433
service@maggi-technology.com

SALES

+39 0571 635 474
sales@maggi-technology.com



MADE
in ITALY