

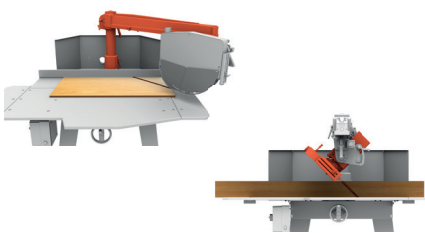
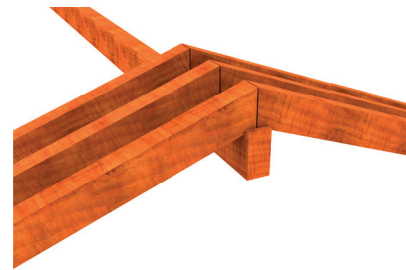


Manual,
radial-arm,
crosscut saw



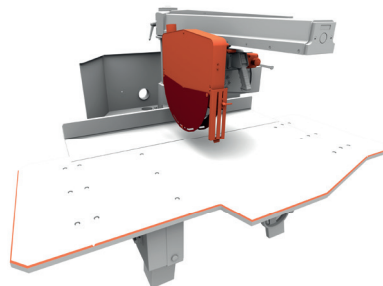
BEST 960 S

For straight (90°), miter (0° to 45°- left) cross cutting and bevel cutting at 45° left and right, of wooden-based panels and solid wood boards up to 3mt. For furniture manufacturing and joinery.



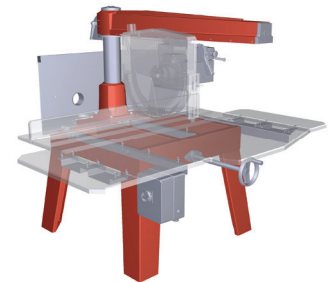
VERSATILE

Swivelling arm up to 45° left and right and left tilting cutting-head (0° to 45° with stop and lock at any intermediate angle) allow many different cutting operations for the greatest versatility.



SAFE

Sound-insulated, full-cover blade guard with safety microswitch, anti-kickback, well-dimensioned working bench and emergency button definitively contribute to the operator safety during the cutting process.



SOLID AND ACCURATE

Rugged steel construction, arm and base made of cast iron. Interchangeable and tempered-steel made guides. Cutting head sliding on 8 ball bearings for a smooth, precise and effortless carriage movement.

- **Small footprint** : well suited to small workshops
- **Easy to use**
- **Versatile**
- **Useful complement** to panel saws

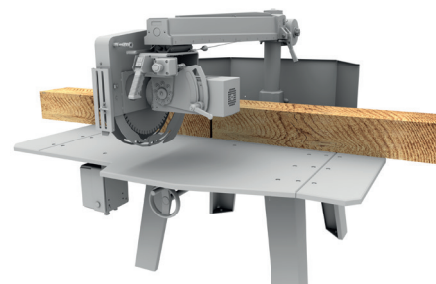


BEST 960 S SERVICE

Worldwide after-sale service.
Real-time, on-line remote assistance through a dedicated augmented reality APP.
Spare-parts availability for up to 10 years, shipment within 24 hrs

DATA SHEET

Max. cutting height:	200 mm
Max. cutting width	850 x 20 h mm
Min..cutting width	680 x 200 h mm
Max.length of workpiece	unlimited
Max. cutting width for ripping	not allowed
Height of blade at 45° from the table	0 - 135 mm
Min. and Max. cutting width at 45° (right)	470 - 590 mm
Min. and Max. cutting width at 45° (left)	280-400 mm
Height of blade from working bench	0 - 40 mm
Blade diameter	565 mm
Blade bore diameter	30 mm
Motor	HP/ KW 7,5/5,5 RPM 2800
Working bench dimensions	1970x1285 x 25 mm
Diameter of dust collection nozzle on blade guard	60 mm
Diameter of dust collection nozzle on rear hood	100 mm (n.2)
Overall dimensions of full- assembled machine and net weight	1970x1740x 1720 mm / 362 kg
Package dimensions and gross weight	1500x1000x1.600 mm peso 432 Kg
Dimensions and gross weight half assembled machine	1700 x 1250 x h 1191 mm / 432 Kg



TOP OF THE RANGE

7,5 HP Motor and max. cutting height up to 200 mm make this machine ideal for carrying out heavy-duty working process, like cutting of beams and/or different types of building structures. Very quick set-up thanks to the front lifting handle for the cutting-height adjustment.

CUTTING HEIGHT

CUTTING

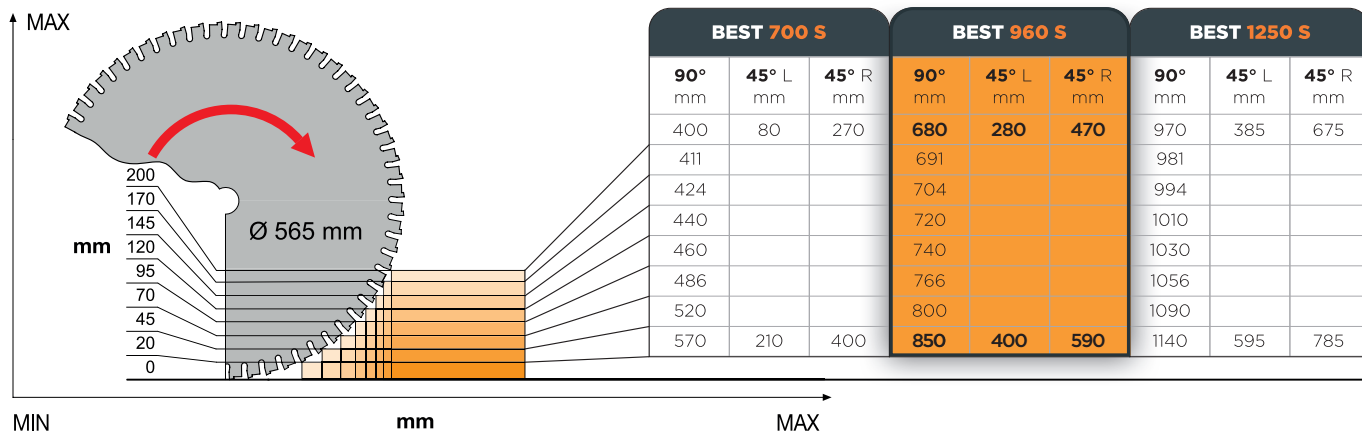
45°
SX



45°
DX

WIDTH

90°



SERVICE

+39 0571 635 433

service@maggi-technology.com

MAGGI TECHNOLOGY

Via delle Regioni, 299
50052 Certaldo (Firenze) Italia

SALES

+39 0571 635 474

sales@maggi-technology.com



MADE
in ITALY